

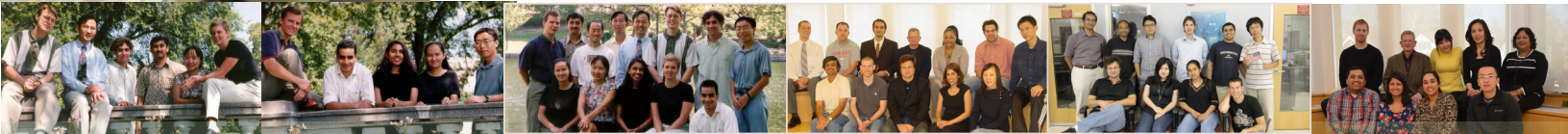
Yoram Rudy Lab Alumni Reunion

Wednesday, May 23 - Thursday, May 24



Brauer Hall, Room 12

Washington University in St. Louis
1 Brookings Drive, St. Louis, MO 63130



PROGRAM

Wednesday, May 23, 2018

12:00 p.m. (Noon) – 1:30 p.m.

Registration, Lunch and Welcoming Remarks
Lori Setton

1:30 p.m. – 2:30 p.m.

Yoram Rudy Lab - The Early Days
Pedro Diaz, Ching-Hsing Luo

2:30 p.m. – 4:00 p.m.

Yoram Rudy Lab - CWRU and Cell Modeling
Moderator: **Thomas Hund**
Discussants: Colleen Clancy, Gregory Faber, Jan Kucera, Robin Shaw

4:00 p.m. – 4:15 p.m.

Coffee Break

4:15 p.m. – 5:45 p.m.

Yoram Rudy Lab - Wash U and Cell Modeling
Moderator: **Jianmin Cui**
Discussants: Jordi Heijman, Hsiang-Chun Lee, Leonid Livshitz, Jonathan Silva

5:45 p.m.

Closing Remarks & Group Photo Session
Aaron Bobick

Thursday, May 24, 2018

8:00 a.m. – 8:30 a.m.

Breakfast

8:30 a.m. – 8:50 a.m.

Perspective on Cardiac Mapping and ECGI
Ralph Damiano, Jr.

8:50 a.m. – 9:40 a.m.

Yoram Rudy Lab - CWRU and ECGI
Moderator: **Raja Ghanem**
Discussants: Ping Jia, Paul Ryu

9:40 a.m. – 10:50 a.m.

Yoram Rudy Lab - Wash U and ECGI
Moderator: **Richard Schuessler**
Discussants: Phillip Cuculich, Jennifer Silva, Yong Wang

10:50 a.m. – 11:50 a.m.

Yoram Rudy Lab - The Present
Moderator: **Yoram Rudy**
Discussants: Smiruthi Ramasubramanian, Jiajing Xu, Ashwin Mohan, Ramya Vijayakumar, Christopher Andrews

11:50 a.m.

Closing Remarks
Yoram Rudy

LIST OF ATTENDEES (A-Z BY LAST NAME)

Christopher Andrews

Graduate Research Assistant
Department of Biomedical Engineering
Washington University in St. Louis
candrews@wustl.edu

Maya Bera

Senior Computer Specialist
Department of Biomedical Engineering
Washington University in St. Louis
maya_bera@wustl.edu

Aaron Bobick, Ph.D.

Dean & James M. McKelvey
Professor, School of Engineering
Washington University in St. Louis
afb@wustl.edu

Colleen E. Clancy, Ph.D.

Associate Vice Chancellor for
Academic Personnel
Schools of Human Health Sciences
Professor of Physiology & Membrane
Biology; Professor of Pharmacology
School of Medicine
University of California, Davis
ceclancy@ucdavis.edu

Phillip Cuculich, M.D.

Associate Professor of Medicine
Cardiovascular Division
Washington University in St. Louis
School of Medicine
pcuculic@wustl.edu

Jianmin Cui, Ph.D.

Professor, Department of
Biomedical Engineering
Washington University in St. Louis
jcui@wustl.edu

Ralph James Damiano, Jr., M.D.

Evarts A. Graham Professor of Surgery
& Chief, Division of Cardiothoracic
Surgery, Washington University
in St. Louis School of Medicine
damianor@wustl.edu

Keith Decker, Ph.D.

Computational Biologist, Monsanto
keithforestdecker@gmail.com

Pedro Diaz, Ph.D.

Dicon Group
pdiaz@dicongroup.com

Gregory Faber, Ph.D.

Integration Engineer
Epic Systems Corporation
gregoryfaber@gmail.com

Raja Ghanem, Ph.D.

Program Director, EP Mapping &
Navigation, Medtronic AF Solutions
rajaghanem@gmail.com

Jordi Heijman, Ph.D.

Assistant Professor, Cardiology
CARIM School for Cardiovascular
Diseases, Maastricht University
The Netherlands
jordi.heijman@maastrichtuniversity.nl

Thomas Hund, Ph.D.

Professor, Biomedical Engineering
The Ohio State University
hund.1@osu.edu

Ping Jia, Ph.D.

CardioInsight Consultant, Medtronic
Co-Founder, CardioInsight, Inc.
(acquired by Medtronic in 2015)
ping.jia@medtronic.com

Jan Kucera, Ph.D.

Prof. Dr. Med., Department of
Physiology, University of Bern
Switzerland
kucera@pyl.unibe.ch

Hsiang-Chun Lee, M.D., Ph.D.

Physician, Division of Cardiology
Department of Internal Medicine,
Kaohsiung Medical University Hospital
Kaohsiung, Taiwan
hchlee@kmu.edu.tw

Leonid Livshitz, Ph.D.

Staff Fellow, Center for Devices &
Radiological Health ODE/DOED/CLRD
U.S. Food & Drug Administration
Leonid.Livshitz@fda.hhs.gov

Ching-Hsing Luo, Ph.D.

Chair & Professor, School of Data &
Computer Science
The Third Affiliated Hospital
Sun Yat-sen University, China
luojinx5@mail.sysu.edu.cn

Ashwin Mohan, Ph.D.

Research Scientist
Department of Biomedical Engineering
Washington University in St. Louis
amohan22@wustl.edu

Jeanne Nerbonne, Ph.D.

Alumni Endowed Professor of
Molecular Biology & Pharmacology
Director, Center for Cardiovascular
Research; Co-Director, CIMED
Washington University
School of Medicine
jnerbonne@wustl.edu

Colin Nichols, Ph.D.

Carl Cori Professor, Director of CIMED,
Professor of Cell Biology & Physiology,
Washington University
School of Medicine
cnichols@wustl.edu

Charu Ramanathan, Ph.D.

Co-Founder & CEO vitalxchange
Co-Founder Lokyata
Co-Founder, President & CSO
CardioInsight, Inc.
(acquired by Medtronic in 2015)
charu.ramanathan@proinbox.com

Smiruthi Ramasubramanian

Graduate Research Assistant
Department of Biomedical Engineering
Washington University in St. Louis
sramasubramanian@wustl.edu

Stacey Rentschler, M.D., Ph.D.

Assistant Professor of Medicine
Cardiovascular Division
Washington University in St. Louis
School of Medicine
stacey.rentschler@wustl.edu

Yoram Rudy, Ph.D., F.A.H.A., F.H.R.S.

The Fred Saigh Distinguished Professor
Professor of Biomedical Engineering,
Cell Biology & Physiology, Medicine,
Radiology, and Pediatrics
Director, Cardiac Bioelectricity and
Arrhythmia Center (CBAC)
Washington University in St. Louis
rudy@wustl.edu

Paul (Kyungmoo) Ryu, Ph.D.

Senior Director, Systems Engineering
and Applied Research at Abbott
pryu@sjm.com

Richard Schuessler, Ph.D.

Director, Cardiothoracic Surgery (CTS)
Research Laboratory
Research Professor of Surgery
(Cardiothoracic Surgery)
Research Professor, Biomedical
Engineering
schuesslerr@wustl.edu

Lori Setton, Ph.D.

Lucy & Stanley Lopata Distinguished
Professor & Chair of Biomedical
Engineering, Department of
Biomedical Engineering
Washington University in St Louis
setton@wustl.edu

Robin Shaw, M.D., Ph.D.

Wasserman Foundation Chair in
Cardiology in honor of S. Rexford
Kennamer MD, Cedars-Sinai
robin.shaw@cshs.org

Jennifer N. Avari Silva, M.D.

Associate Professor of Pediatrics,
Division of Cardiology
Washington University in St. Louis
School of Medicine
jennifersilva@wustl.edu

Jonathan Silva, Ph.D.

Associate Professor, Department of
Biomedical Engineering
Washington University in St. Louis
jonsilva@wustl.edu

George Van Hare, M.D.

The Louis Larrick Ward
Professor of Pediatrics
Chief, Division of Pediatric Cardiology
Researcher, Patient Oriented Research
Unit, Washington University in St. Louis
School of Medicine
vanhare@wustl.edu

Ramya Vijayakumar, Ph.D.

Postdoctoral Research Associate
Department of Biomedical Engineering
Washington University in St. Louis
rvijayak@wustl.edu

Yong Wang, Ph.D.

Assistant Professor, Department of
Obstetrics & Gynecology
Washington University in St. Louis
School of Medicine
wangyong@wustl.edu

Jiajing Xu

Graduate Research Assistant
Department of Biomedical Engineering
Washington University in St. Louis
j.xu@wustl.edu